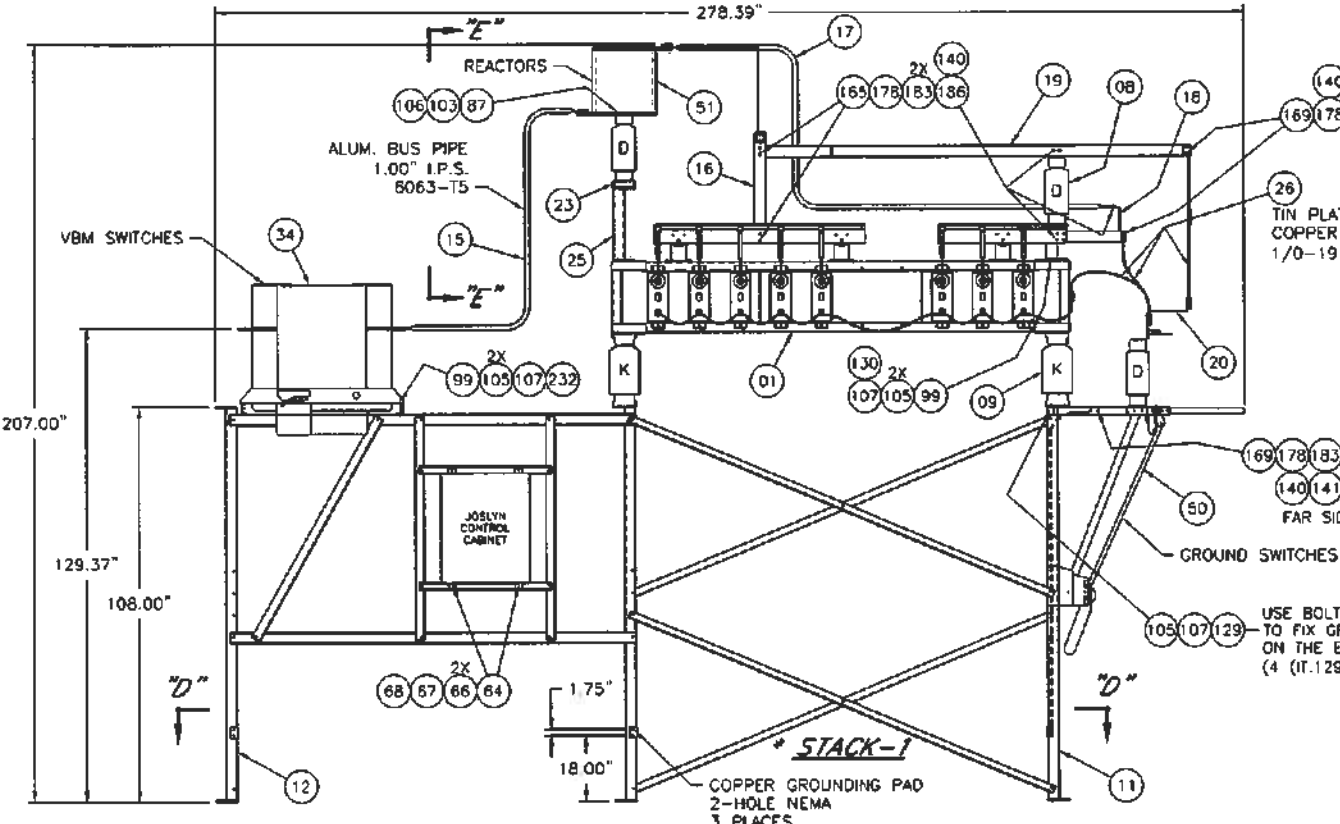
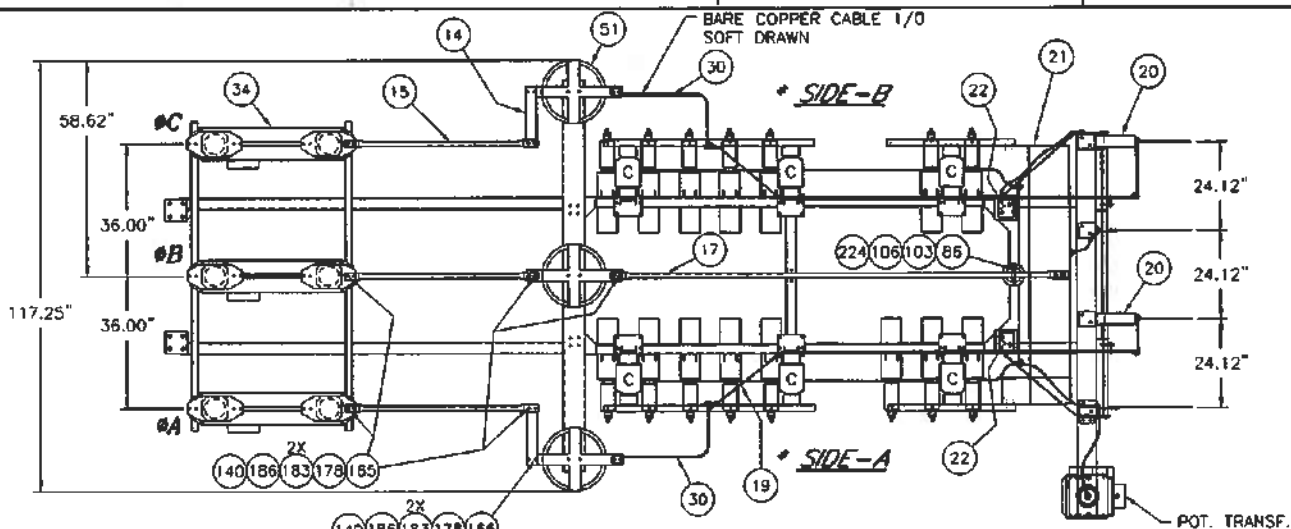
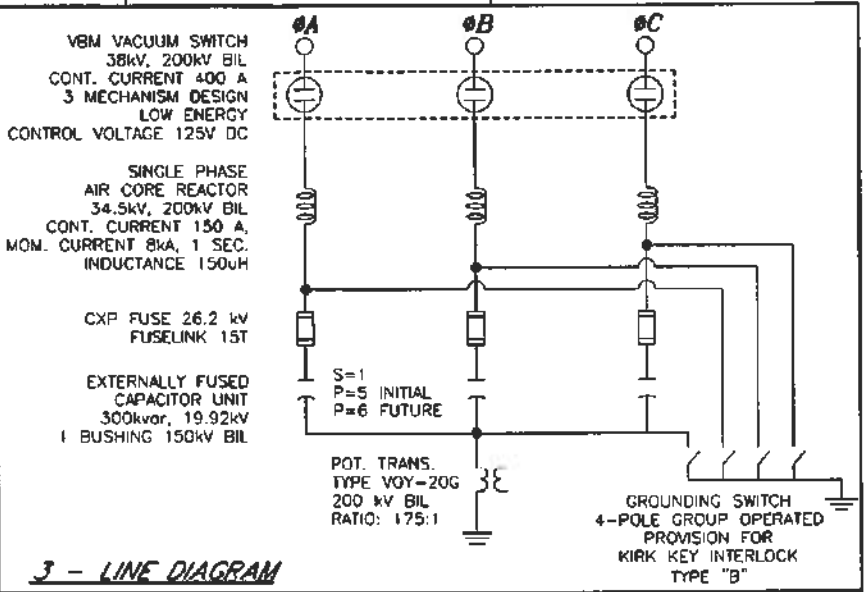


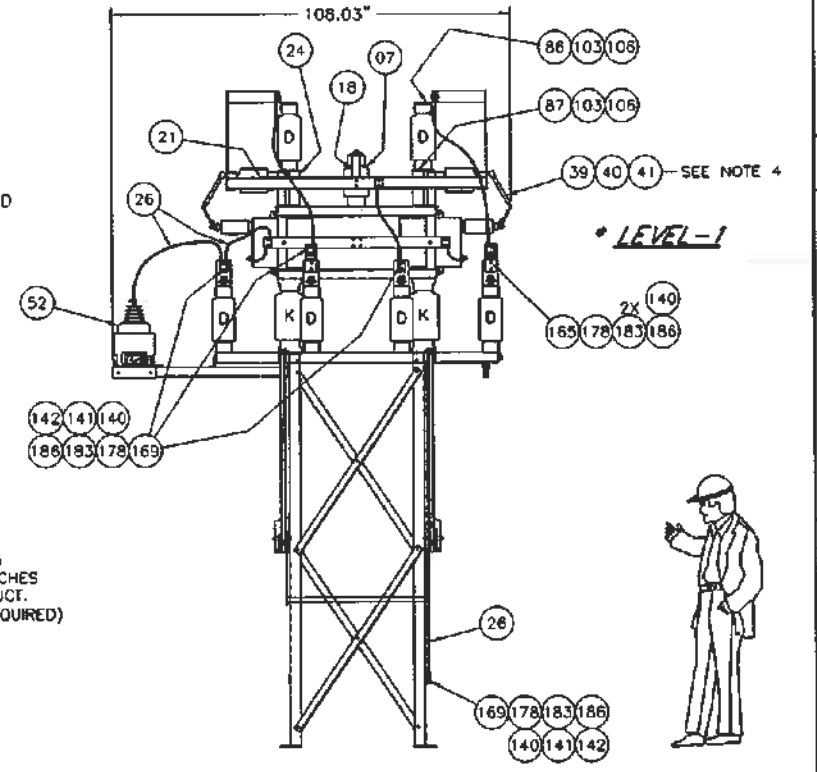
VIEW "E-E"



SECTION "D-D"
(ANCHOR BOLT PLAN)



3 - LINE DIAGRAM



LEVEL-1

	BOLT PENETRATION	TOP CLAMP	LOCK WASHER	NUT
	2-HOLE CLAMP CONNECTOR	TOP CLAMP	LOCK WASHER	NUT
	FLAT WASHER	TOP CLAMP	LOCK WASHER	NUT
	PENETROX	BOTTOM CLAMP	LOCK WASHER	NUT
	1-HOLE CLAMP CONNECTOR	BOTTOM CLAMP	LOCK WASHER	NUT
	FLAT WASHER	BOTTOM CLAMP	LOCK WASHER	NUT
	BOLT PENETRATION	FLAT WASHER	LOCK WASHER	NUT
	ELECTRICAL JOINTS	FLAT WASHER	LOCK WASHER	NUT
	NON-ELECTR. JOINTS	FLAT WASHER	LOCK WASHER	NUT

- NOTES:
- * REFERENCE FOR CAPACITOR POSITIONING CHART 2GUL303569E0010, 2GUL303569E0011, 2GUL303569E0012 AND 2GUL303569E0013 SEE INSTRUCTION MANUAL SECTION 3
 - ITEM 61 & 62 (BANK NAMEPLATE & MOUNTING SCREWS) ARE SHIPPED AS LOOSE ITEMS FOR ON SITE LOCATION BY THE CUSTOMER. DRILL #27 (#0.144")
 - 10% MORE HARDWARE SHIPPED ON SITE
 - SEE DRAWING 2GU704-0012 AND INSTRUCTION I.L.38-851-5 FOR INSTALLATION.
 - USE PENETROX (IT. 140) ON STAINLESS STEEL THREADS BETWEEN BOLT AND NUT TO AVOID GALLING.
 - POT. TRANS. (IT. 52) NOT SHOWN ON ELEVATION VIEW

BASE LOADS PER LEG	
TENSILE FORCE	3000 lbf
COMPRESSION FORCE	6900 lbf
SHEAR FORCE	1000 lbf

- INSTRUCTIONS FOR MAKING ELECTRICAL JOINTS
(CONTACT SURFACE PREPARATION)
- REMOVE DIRT AND FOREIGN SUBSTANCES FROM CONTACT SURFACES.
 - ABRADE THESE SURFACES WITH WIRE BRUSH OR MEDIUM EMERY CLOTH.
 - COAT ALUMINUM CONTACT SURFACES THOROUGHLY WITH PENETROX #RK5109X-0001.
 - ASSEMBLE JOINT WITHOUT REMOVAL OF COMPOUND. EXCESSIVE MATERIAL WILL ESCAPE AS PRESSURE IS APPLIED AND MAY BE WIPED AWAY.

GENERAL TORQUE REQUIREMENTS		
NUT/BOLT SIZE	NUT	TORQUE (MIN TORQUE FT LBS)
3/8-16UNC	ST.SL.	20-27
	CU.SL.	27-33
1/2-13UNC	ST.SL.	51-66
	CU.SL.	66-75
5/8-11UNC	ST.SL.	127-163
	CU.SL.	163-190

CUSTOMER:	FPL ENERGY
CUSTOMER ORDER No.:	U138241
SUBSTATION NAME:	BLUE SUMMIT WIND FARM
APPROX. WEIGHT:	4500 lbs WITH FUT. EXPANSION.

01 08-11-20	FINAL FOR CONSTRUCTION	P.M.	D.L.	B.G.
REVISIONS	LOC.	DESCRIPTION	BY	CHECK
ABB INC., CAPACITOR DIVISION, CANADA				
TITLE: CAP. BANK 4.5 Mvar, 34.5 kV, EXT. FUSED 200 kV BIL, 60 Hz., UNGND. WYE				
DRAFT. P.M.	DATE: 08-08-22	TOLERANCES UNLESS OTHERWISE SPECIFIED	GENERAL ± 0.25" C/C HOLES LOCATION ± 0.15" ANGLE ± 1"	
CHECK I.H.	DATE: 08-08-27	SCALE: 1/2" = 1'-0"	NO: 2GUT303569E0010	
APPR. V.D.	DATE: 08-08-28	REV	01	

NO: 2GUT303569E0010